



# Process Book

Emily Hayes

B

8

K

KB

~~ascend~~

U	C
K	3

KB

UC KB

uc KB

ASCEND  
KIDS

KB

U	C
K	3

KB

uc KB

K  
KB

KB

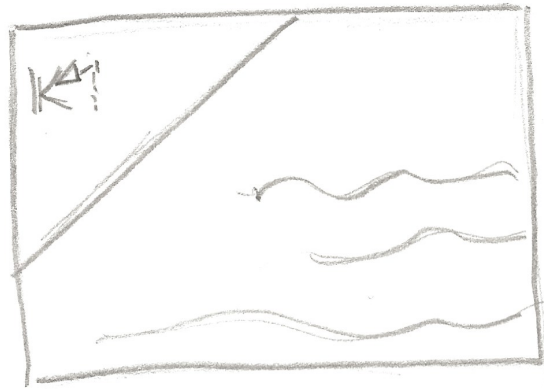
Love this  
uc KB



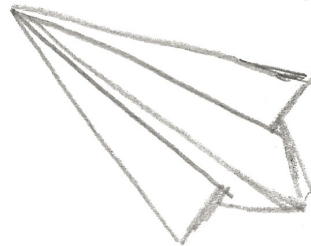
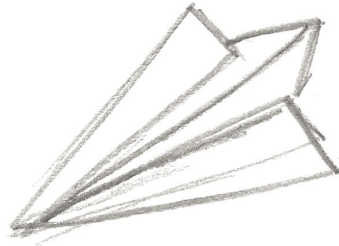
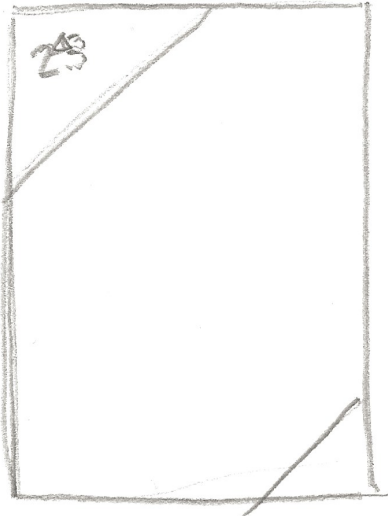
K

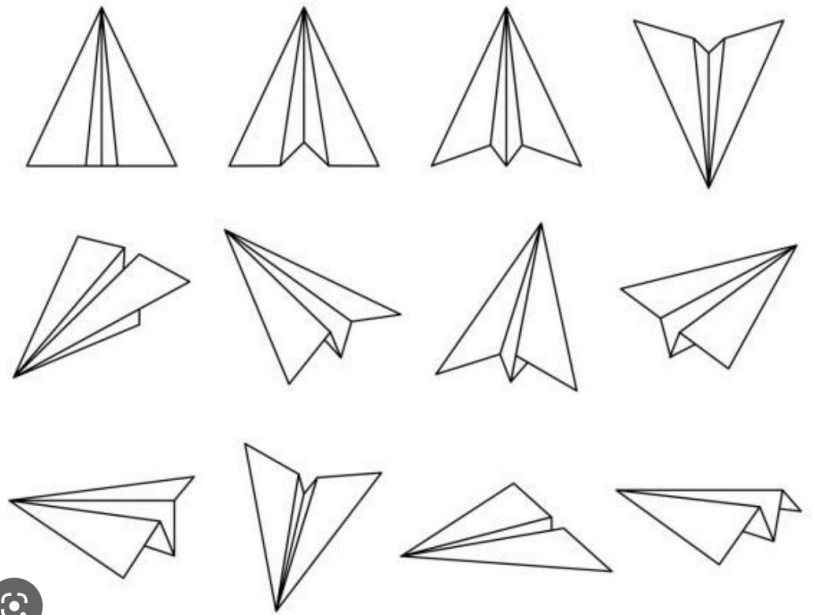
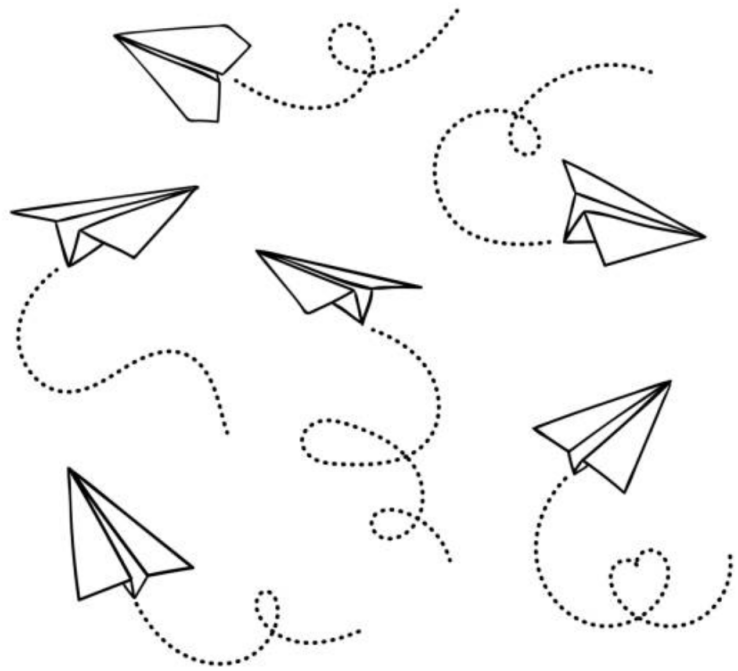


2



UNITED CITY  
KIDS





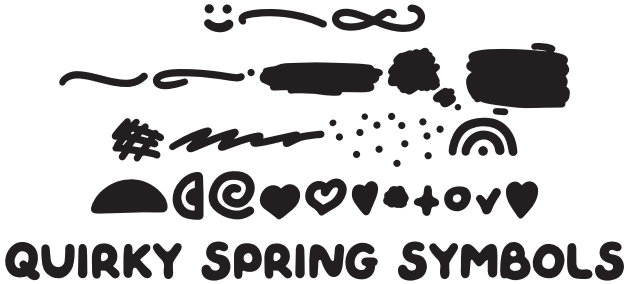
Previous/Current branding that I was supplementing and trying to work with so it could still be used as needed.

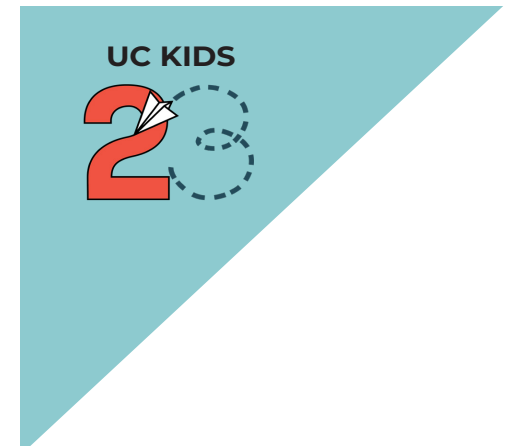
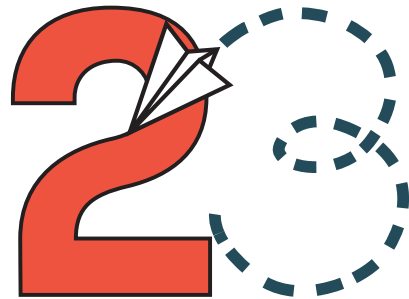
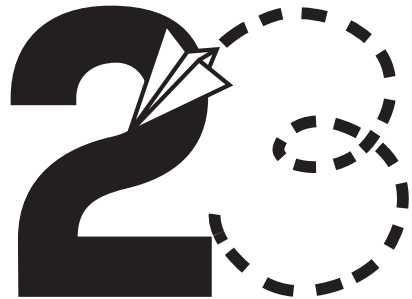
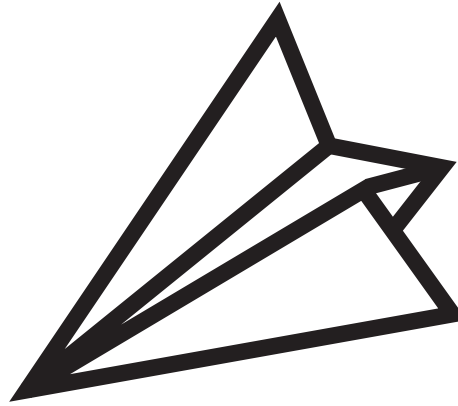
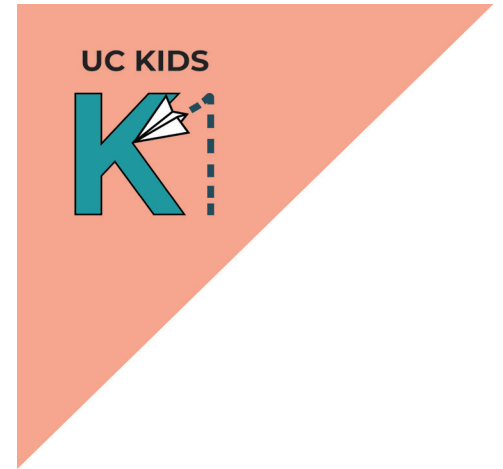
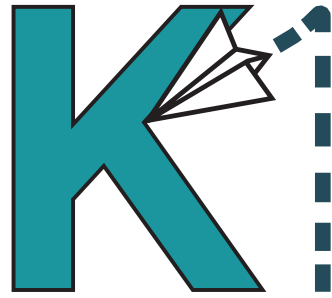
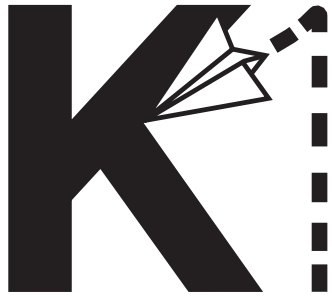


Fonts

**QUIRKY SPRING**

**NEUTRAL FACE**

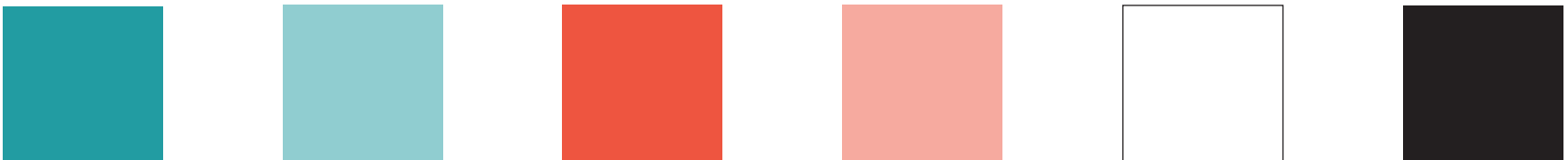




## Previous Branding Palette

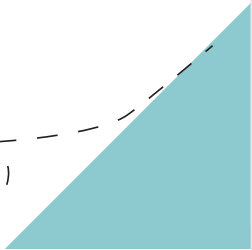
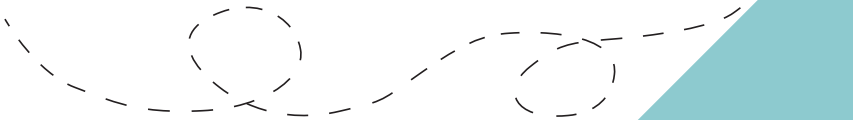


## New Palette

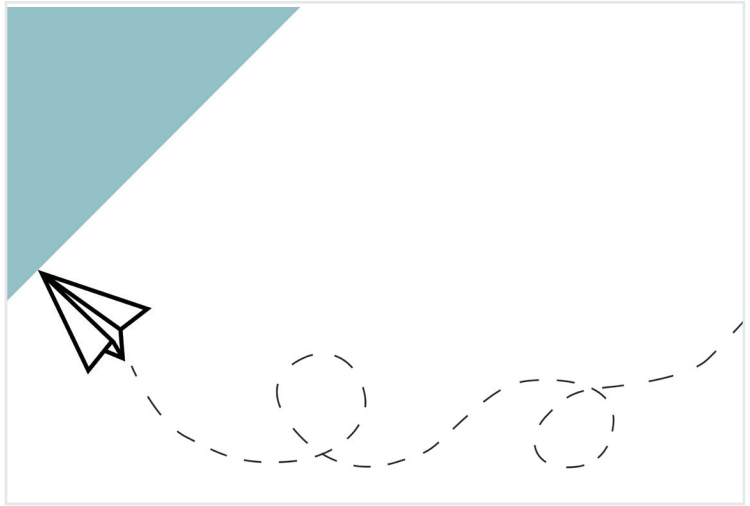
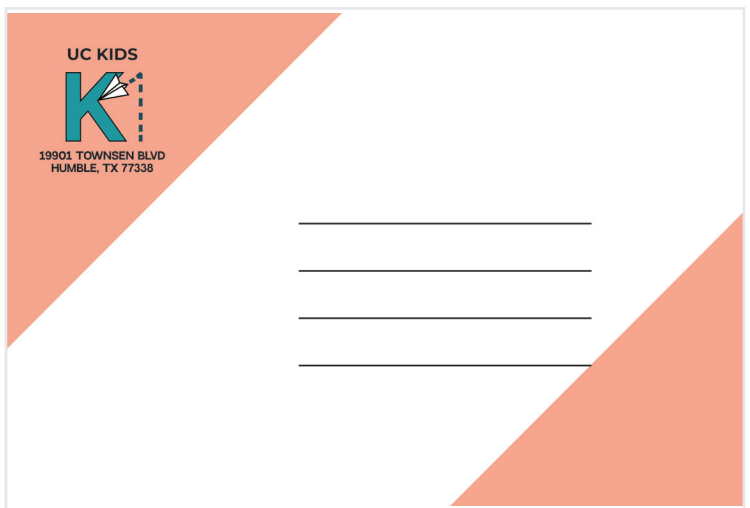
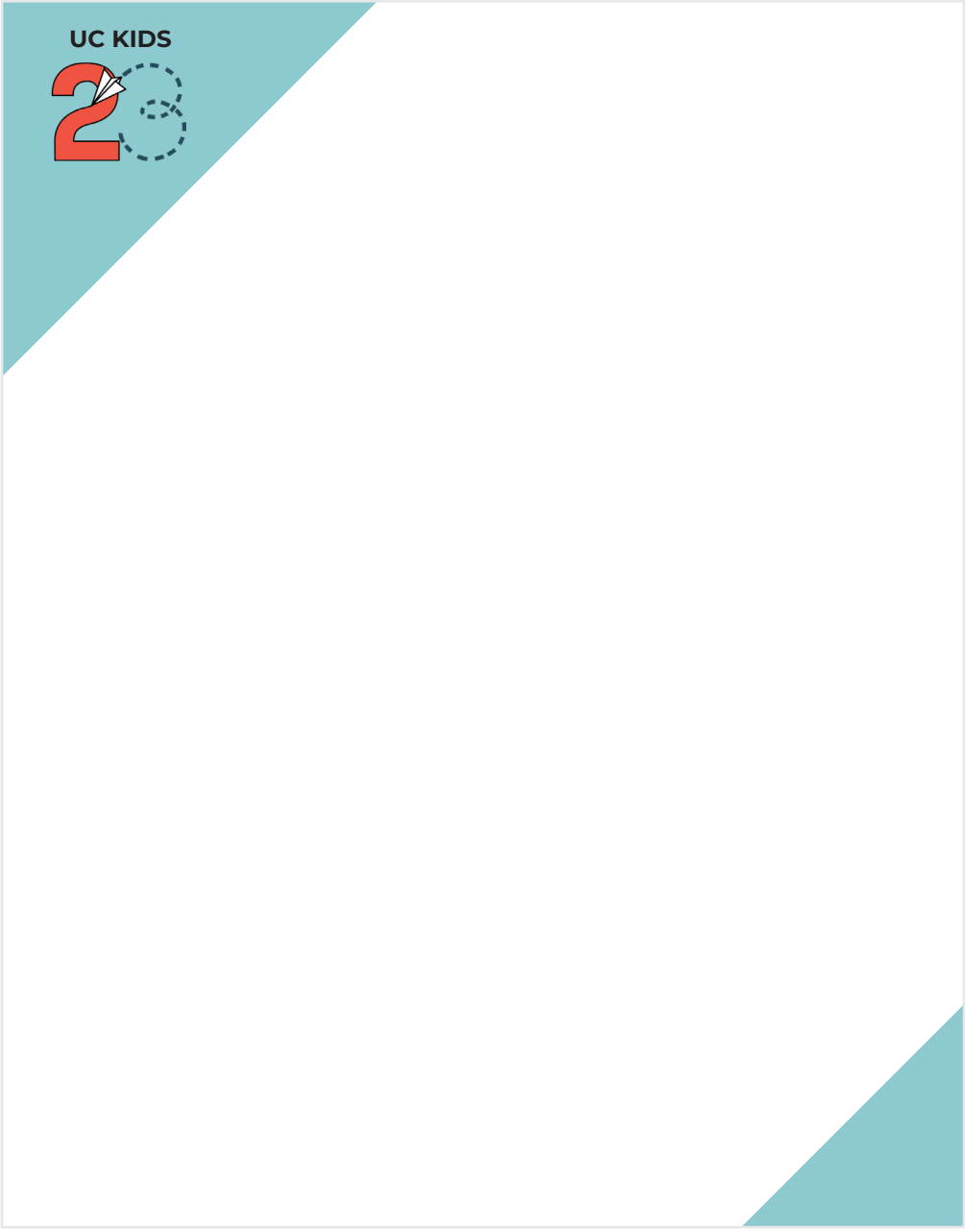


UNITED CITY  
KIDS

UC KIDS








**UNITED CITY  
KIDS**



John Smith  
Kids Pastor

[unitedcity.church/kids](http://unitedcity.church/kids)  
[jsmith@unitedcity.church](mailto:jsmith@unitedcity.church)


**UC KIDS**



John Smith  
Kids Pastor

[unitedcity.church/kids](http://unitedcity.church/kids)  
[jsmith@unitedcity.church](mailto:jsmith@unitedcity.church)

**UC KIDS**



John Smith  
Kids Pastor

[unitedcity.church/kids](http://unitedcity.church/kids)  
[jsmith@unitedcity.church](mailto:jsmith@unitedcity.church)

**UNITED CITY  
KIDS**

19901 TOWNSEN BLVD  
HUMBLE, TX 77338

